



Society of Women Engineers

Current Status and Statistics

Statistics on Women in Engineering

Information Provided by Karen Horting

aspire • advance • achieve

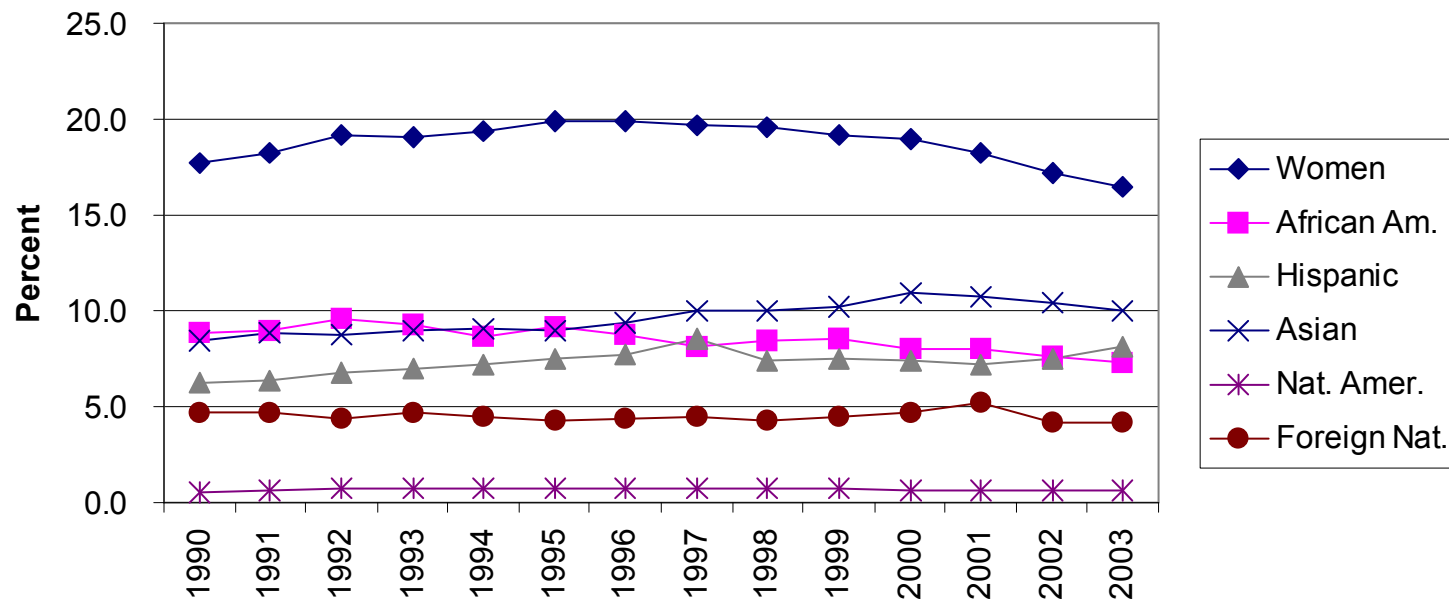


Advanced Placement Tests

In 2004

- 55% of Overall AP test-takers were girls
- 48% of Calculus AP test-takers were girls
- 15% of Computer Science AP test-takers were girls

Women and Minorities as a Proportion of First-Year Undergraduate Engineering Enrollments, 1990 to 2003



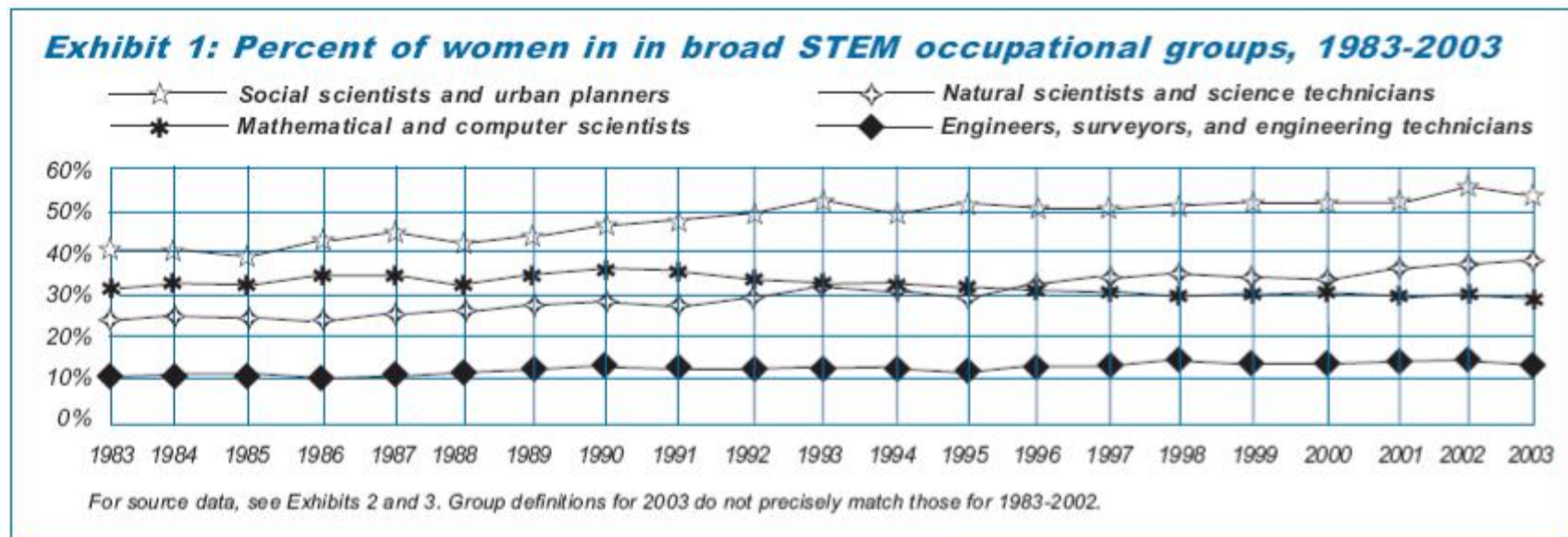
Source: CPST, data derived from Engineering Workforce Commission

First-year enrollment in engineering dropped 3% to 103,834 in 2003. Even more disturbing is the continuing decline in recent years of women and African Americans as a proportion of first year enrollments.

Engineering Undergraduates

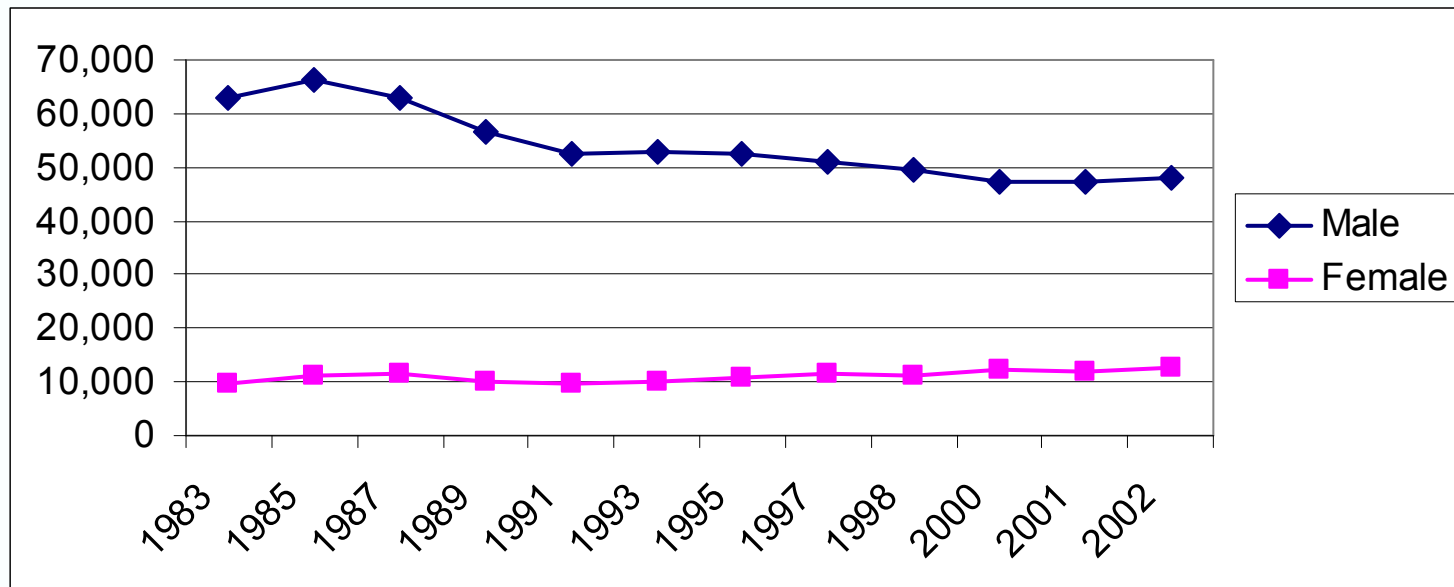
- Women:
 - 20% of engineering undergraduates (16.9% of freshmen)
 - 55% of all undergraduates
- African-Americans
 - 5.3% of engineering undergraduates
 - 10.8% of all undergraduates
- Latinos
 - 5.4% of engineering undergraduates
 - 6.4% of all undergraduates
- The percentages in engineering have been decreasing in recent years, while overall participation in higher education among these groups has increased considerably.

STEM in the Workforce



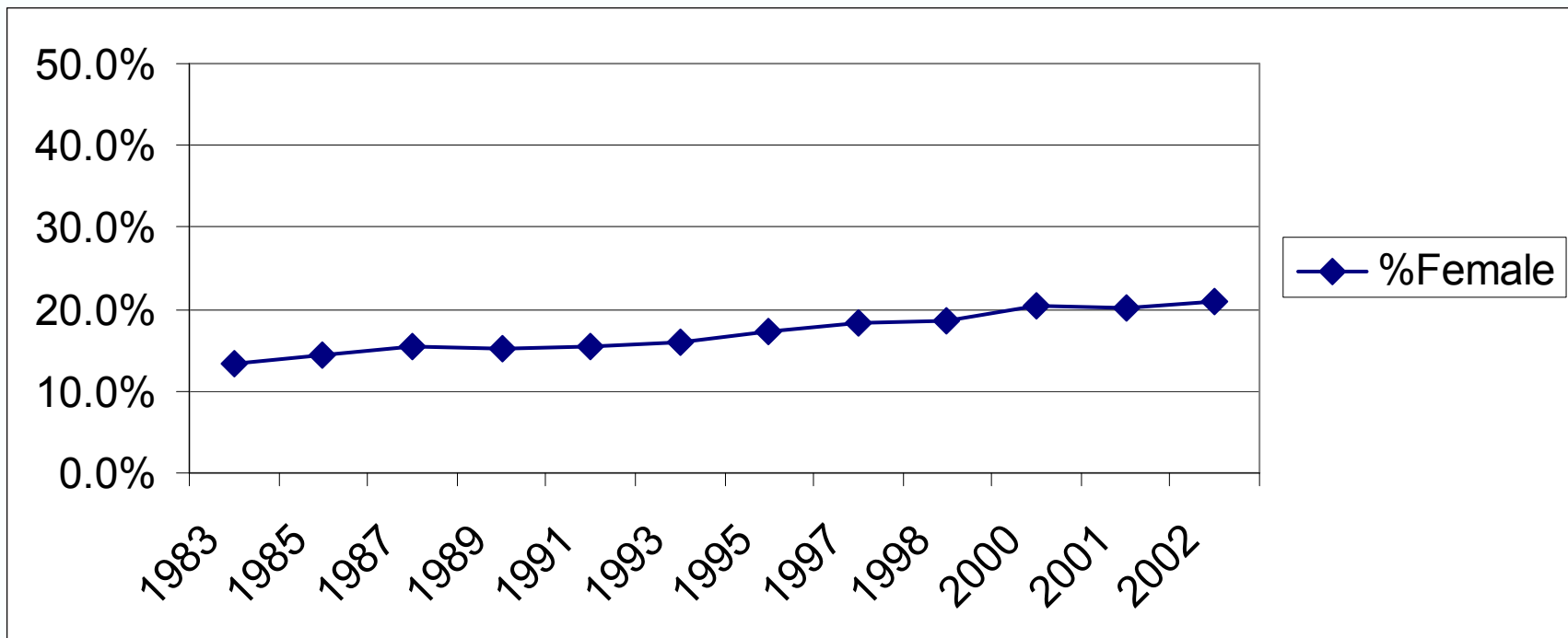
Source: Commission on Professionals in Science and Technology (CPST)
Data from U.S. Bureau of Labor Statistics

Engineering Degrees Awarded by Gender



National Science Board 2006 Science and Engineering Indicators

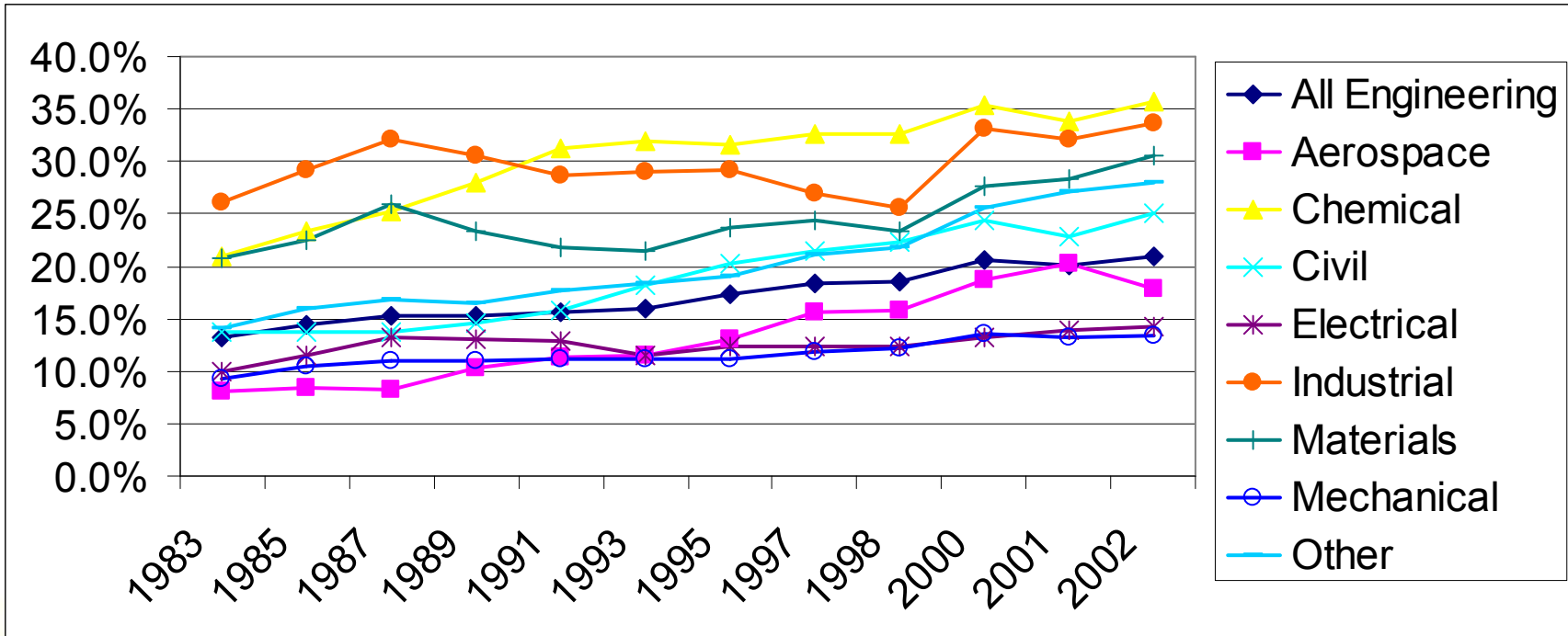
Percentage of Engineering Degrees Awarded to Women



National Science Board 2006 Science and Engineering Indicators



Percentage of Engineering Degrees Awarded to Women by Discipline 2002



National Science Board 2006 Science and Engineering Indicators

aspire · advance · achieve